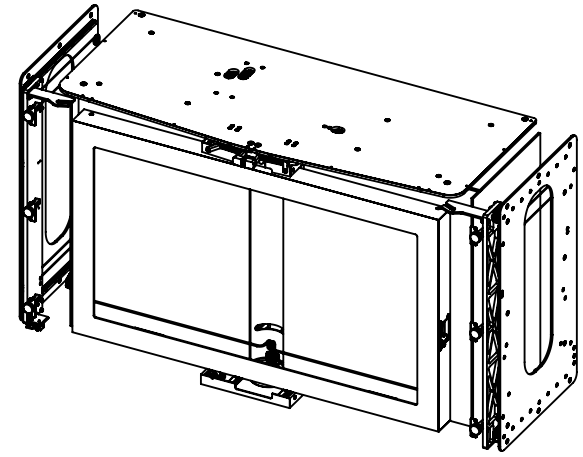



-1/QTY	ITEM	PART NUMBER	Description	SPEC
4	23	NAS1801-3-9	HHMS #10-32 X 0.562, CAD PLATED STEEL	
12	22	MS35207-260	PHCS #10-32 X 0.3125	
4	21	MS24693-S50	FHMS 100 DEG #8-32 X 0.531	
1	20	E04-07-018-0	CABLE CARRIER	△ 2
16	19	AN960-10	FLAT WASHER - NO. 10	
1	18	045-30-028	E2 MICRO SERIES 045 ENERGY CHAIN	△ 2
1	17	35281336-2	CLOSE OUT T-PANEL	
1	16	35281336-1	CLOSE OUT T-PANEL	
1	15	35281335-3	CLOSE OUT PANEL	
1	14	35281335-1	CLOSE OUT PANEL	
8	13	35281276-1	ANGLE MOUNTING BRACKET	
1	12	35281257-1	MONITOR ARM ASSEMBLY	
1	11	35281246-2	GUIDE HINGE ASSEMBLY	
1	10	35281246-1	GUIDE HINGE ASSEMBLY	
2	9	35281244-1	HINGE MOUNT	
1	8	35281237-2	DOOR GUIDE ASSEMBLY	
1	7	35281237-1	DOOR GUIDE ASSEMBLY	
1	6	35281235-1	UPPER SUPPORT ASSEMBLY	
1	5	35281234-1	MONITOR SLIDE HOUSING	
1	4	35281233-2	SIDE PANEL ASSEMBLY	
1	3	35281233-1	SIDE PANEL ASSEMBLY	
1	2	3516017-1	EMI FILTER BOX	
1	1	3513075-1	WIRE SCHEMATIC BIFOLD MONITOR MECHANISM	

REV.	DATE	DESCRIPTION
IR	10/16/14	INITIAL RELEASE
A	11/14/14	ADDED NOTE 3



DETAIL -1

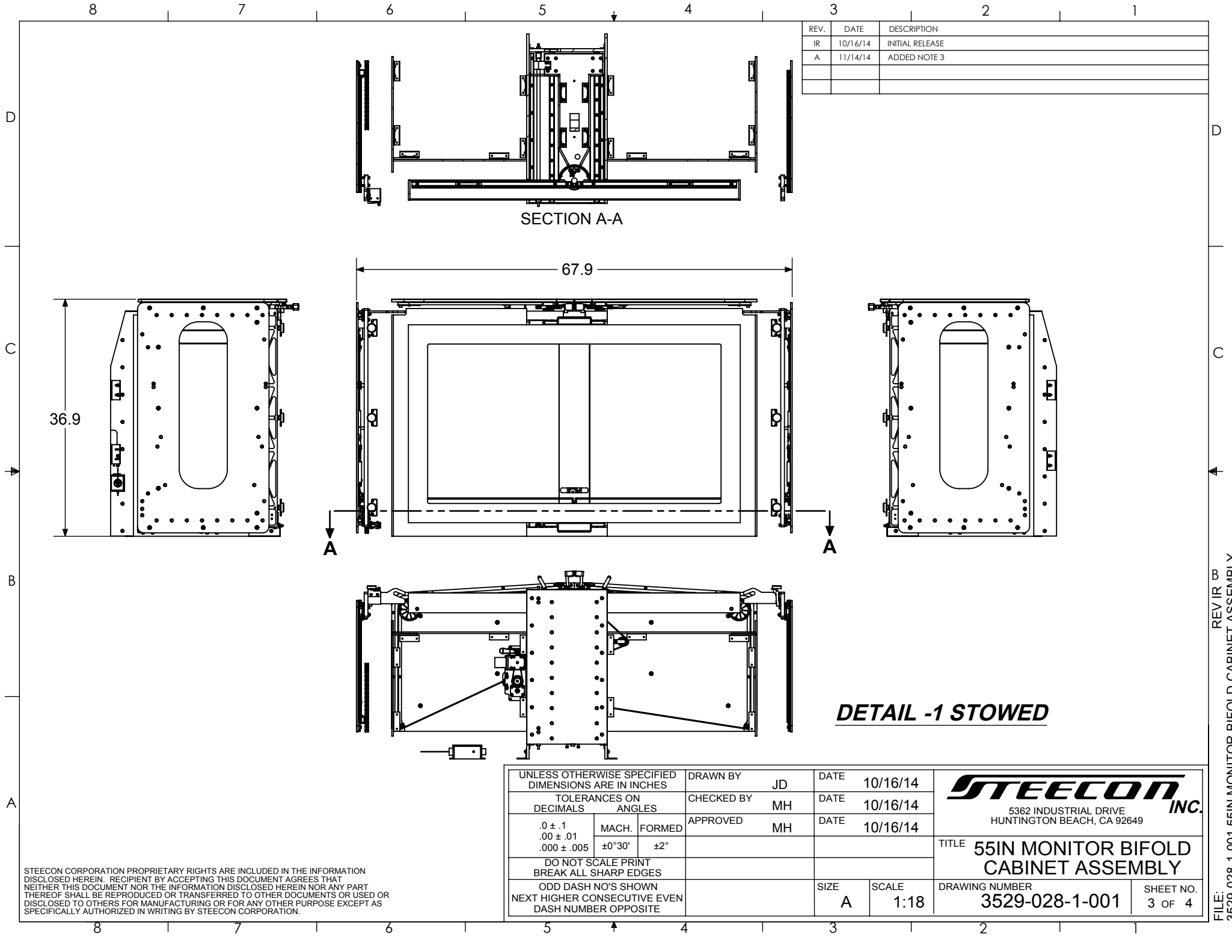
UNLESS OTHERWISE SPECIFIED DIMENSIONS ARE IN INCHES			DRAWN BY	JD	DATE	10/16/14	 5362 INDUSTRIAL DRIVE HUNTINGTON BEACH, CA 92649
TOLERANCES ON DECIMALS ANGLES			CHECKED BY	MH	DATE	10/16/14	
.0 ± .1	MACH.	FORMED	APPROVED	MH	DATE	10/16/14	
.00 ± .01			±0°30'	±2°			
DO NOT SCALE PRINT BREAK ALL SHARP EDGES					SIZE	A	TITLE 55IN MONITOR BIFOLD CABINET ASSEMBLY DRAWING NUMBER 3529-028-1-001 SHEET NO. 1 OF 4
ODD DASH NO'S SHOWN NEXT HIGHER CONSECUTIVE EVEN DASH NUMBER OPPOSITE					SCALE	1:24	

GENERAL NOTES:
UNLESS OTHERWISE SPECIFIED

- BREAK ALL SHARP CORNERS
- △ MANUFACTURED BY IGUS
- IT IS THE RESPONSIBILITY OF THE INSTALLER TO SECURE LOOSE ITEMS

STEECON CORPORATION PROPRIETARY RIGHTS ARE INCLUDED IN THE INFORMATION DISCLOSED HEREIN. RECIPIENT BY ACCEPTING THIS DOCUMENT AGREES THAT NEITHER THIS DOCUMENT NOR THE INFORMATION DISCLOSED HEREIN NOR ANY PART THEREOF SHALL BE REPRODUCED OR TRANSFERRED TO OTHER DOCUMENTS OR USED OR DISCLOSED TO OTHERS FOR MANUFACTURING OR FOR ANY OTHER PURPOSE EXCEPT AS SPECIFICALLY AUTHORIZED IN WRITING BY STEECON CORPORATION.

FILE: 3529-028-1-001 55IN MONITOR BIFOLD CABINET ASSEMBLY REV IR 0




REV.	DATE	DESCRIPTION
IR	10/16/14	INITIAL RELEASE
A	11/14/14	ADDED NOTE 3

SECTION A-A

67.9

36.9

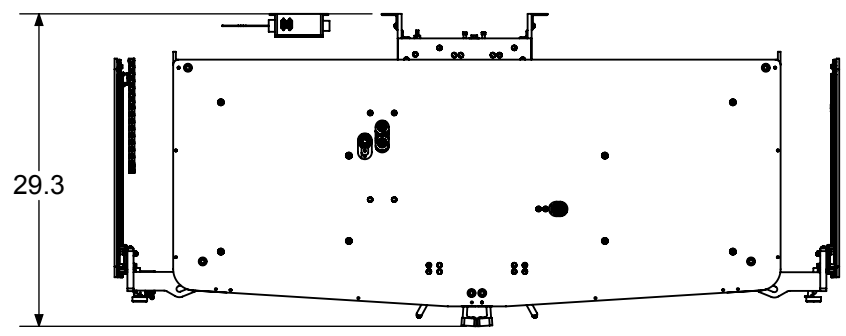
DETAIL -1 STOWED

UNLESS OTHERWISE SPECIFIED DIMENSIONS ARE IN INCHES			DRAWN BY	JD	DATE	10/16/14	 5362 INDUSTRIAL DRIVE HUNTINGTON BEACH, CA 92649
TOLERANCES ON DECIMALS			CHECKED BY	MH	DATE	10/16/14	
MACH. ANGLES			APPROVED	MH	DATE	10/16/14	
.0 ± .1	MACH.	FORMED					
.00 ± .01	±0°30'	±2°					
.000 ± .005							
DO NOT SCALE PRINT BREAK ALL SHARP EDGES					SIZE	A	TITLE 55IN MONITOR BIFOLD CABINET ASSEMBLY DRAWING NUMBER 3529-028-1-001
ODD DASH NO'S SHOWN NEXT HIGHER CONSECUTIVE EVEN DASH NUMBER OPPOSITE					SCALE	1:18	

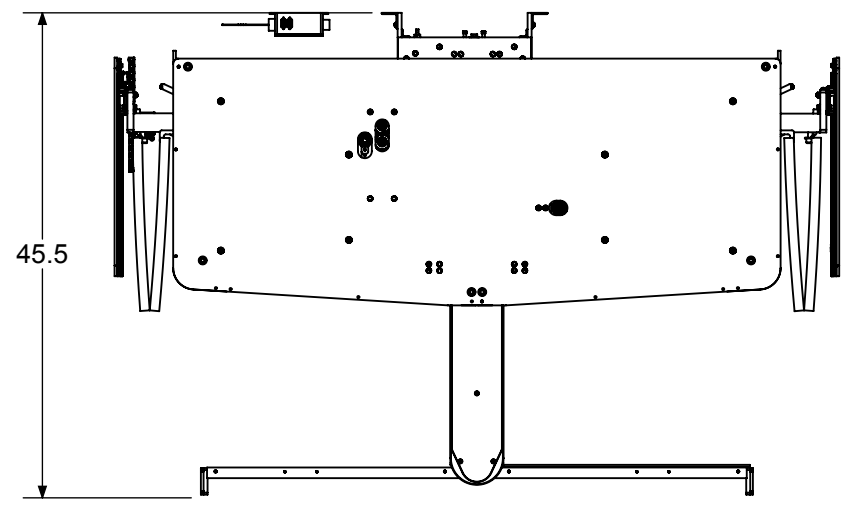
STEECON CORPORATION PROPRIETARY RIGHTS ARE INCLUDED IN THE INFORMATION DISCLOSED HEREIN. RECIPIENT BY ACCEPTING THIS DOCUMENT AGREES THAT NEITHER THIS DOCUMENT NOR THE INFORMATION DISCLOSED HEREIN NOR ANY PART THEREOF SHALL BE REPRODUCED OR TRANSFERRED TO OTHER DOCUMENTS OR USED OR DISCLOSED TO OTHERS FOR MANUFACTURING OR FOR ANY OTHER PURPOSE EXCEPT AS SPECIFICALLY AUTHORIZED IN WRITING BY STEECON CORPORATION.

FILE: 3529-028-1-001 55IN MONITOR BIFOLD CABINET ASSEMBLY REV IR 0

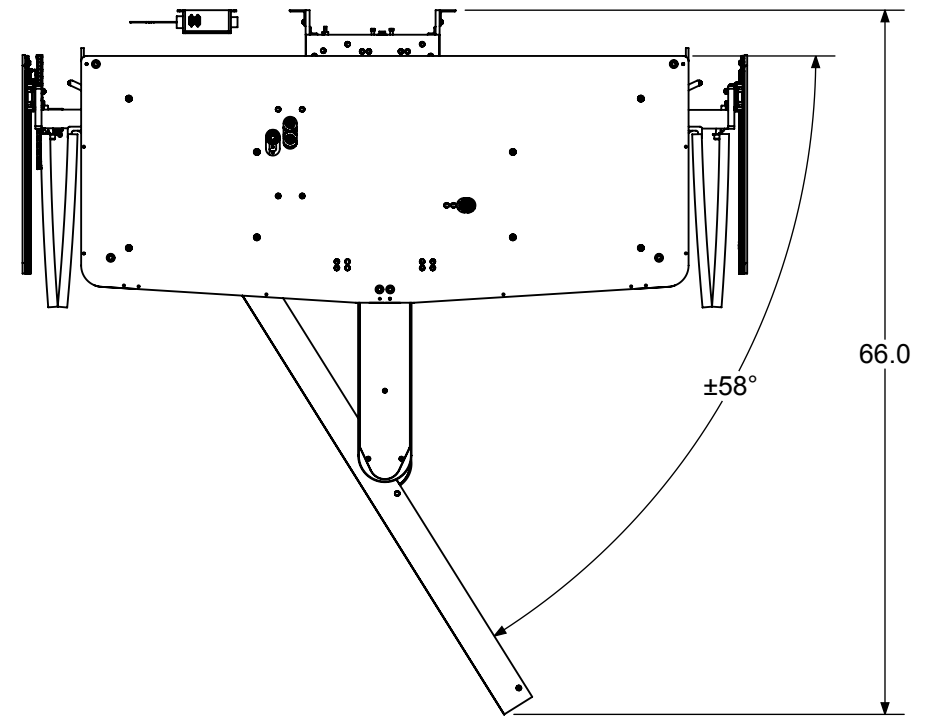
REV.	DATE	DESCRIPTION
IR	10/16/14	INITIAL RELEASE
A	11/14/14	ADDED NOTE 3




DETAIL -1 STOWED



DETAIL -1 DEPLOYED



DETAIL -1 DEPLOYED/ROTATED

UNLESS OTHERWISE SPECIFIED DIMENSIONS ARE IN INCHES			DRAWN BY	JD	DATE	10/16/14	 5362 INDUSTRIAL DRIVE HUNTINGTON BEACH, CA 92649	
TOLERANCES ON DECIMALS			CHECKED BY	MH	DATE	10/16/14		
.0 ± .1	MACH.	FORMED	APPROVED	MH	DATE	10/16/14		
.00 ± .01	±0°30'	±2°						
.000 ± .005							TITLE	55IN MONITOR BIFOLD CABINET ASSEMBLY
DO NOT SCALE PRINT BREAK ALL SHARP EDGES					SIZE	A	SCALE	1:18
ODD DASH NO'S SHOWN NEXT HIGHER CONSECUTIVE EVEN DASH NUMBER OPPOSITE					DRAWING NUMBER	3529-028-1-001	SHEET NO.	4 OF 4

STEECON CORPORATION PROPRIETARY RIGHTS ARE INCLUDED IN THE INFORMATION DISCLOSED HEREIN. RECIPIENT BY ACCEPTING THIS DOCUMENT AGREES THAT NEITHER THIS DOCUMENT NOR THE INFORMATION DISCLOSED HEREIN NOR ANY PART THEREOF SHALL BE REPRODUCED OR TRANSFERRED TO OTHER DOCUMENTS OR USED OR DISCLOSED TO OTHERS FOR MANUFACTURING OR FOR ANY OTHER PURPOSE EXCEPT AS SPECIFICALLY AUTHORIZED IN WRITING BY STEECON CORPORATION.

REV IR 0
FILE: 3529-028-1-001 55IN MONITOR BIFOLD CABINET ASSEMBLY