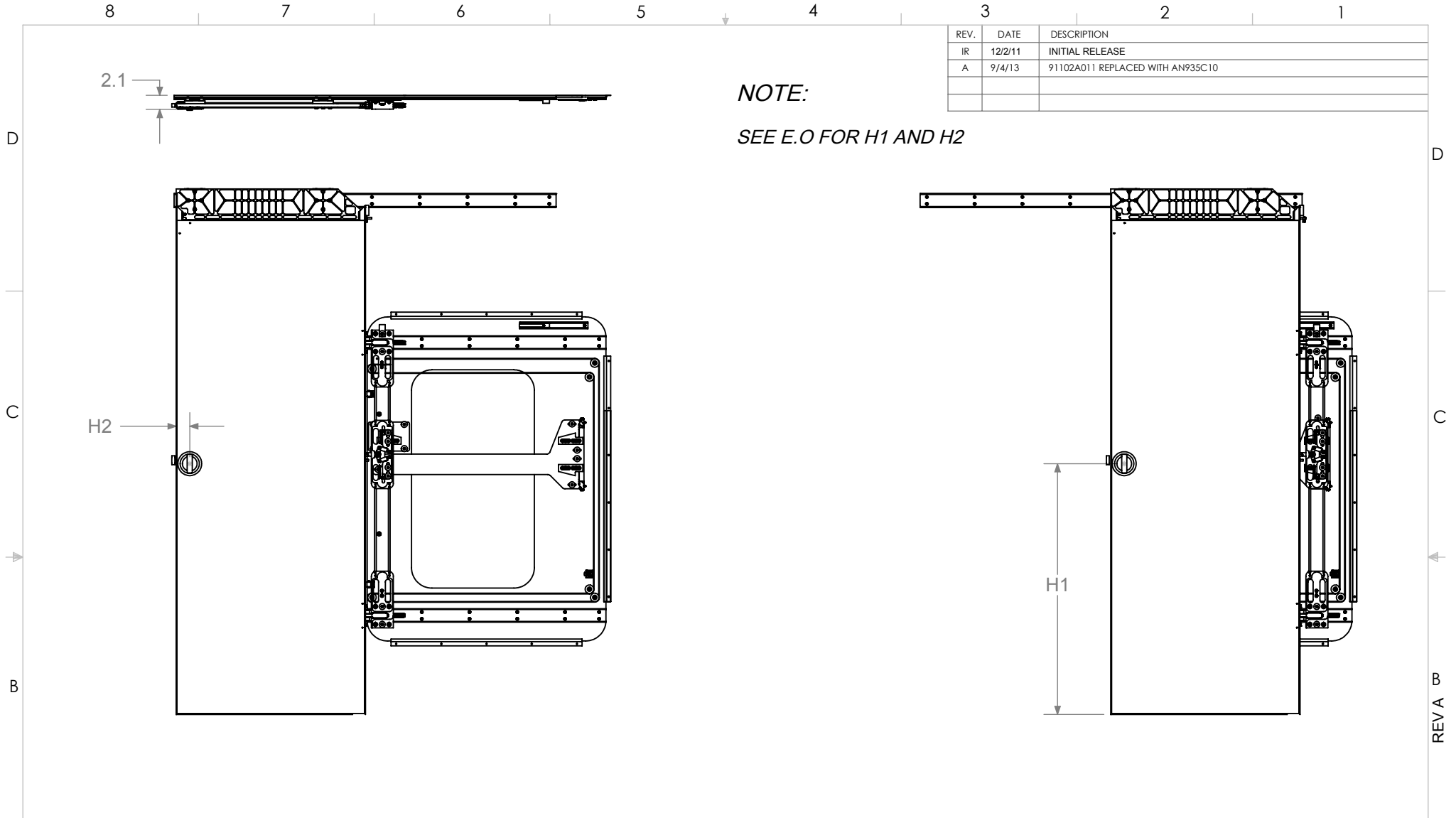



REV.	DATE	DESCRIPTION
IR	12/2/11	INITIAL RELEASE
A	9/4/13	91102A011 REPLACED WITH AN935C10

NOTE:
SEE E.O FOR H1 AND H2



**DETAIL -1 POCKET DOOR ASSEMBLY
DEPLOYED**

**DETAIL -1 POCKET DOOR ASSEMBLY
STOWED**

UNLESS OTHERWISE SPECIFIED DIMENSIONS ARE IN INCHES			DRAWN BY	MT	DATE	12/2/11	 5362 INDUSTRIAL DRIVE HUNTINGTON BEACH, CA 92649
TOLERANCES ON DECIMALS			CHECKED BY	MH	DATE	12/2/11	
ANGLES			APPROVED	MH	DATE	12/2/11	
.0 ± .1	MACH.	FORMED					
.00 ± .01							
.000 ± .005	±0°30'	±2°					
DO NOT SCALE PRINT BREAK ALL SHARP EDGES							TITLE
ODD DASH NO'S SHOWN NEXT HIGHER CONSECUTIVE EVEN DASH NUMBER OPPOSITE							POCKET DOOR ASSY
			SIZE	A	SCALE	1:20	DRAWING NUMBER
							3519-194
							SHEET NO.
							6 OF 6

STEECON CORPORATION PROPRIETARY RIGHTS ARE INCLUDED IN THE INFORMATION DISCLOSED HEREIN. RECIPIENT BY ACCEPTING THIS DOCUMENT AGREES THAT NEITHER THIS DOCUMENT NOR THE INFORMATION DISCLOSED HEREIN NOR ANY PART THEREOF SHALL BE REPRODUCED OR TRANSFERRED TO OTHER DOCUMENTS OR USED OR DISCLOSED TO OTHERS FOR MANUFACTURING OR FOR ANY OTHER PURPOSE EXCEPT AS SPECIFICALLY AUTHORIZED IN WRITING BY STEECON CORPORATION.

FILE:3519-194 POCKET DOOR ASSY

REV A